



The International Student Journey to Germany

Current Challenges

Simon Morris-Lange | Deputy Head of Research Unit
Kiron's Annual Meetup 2019 | 5 September 2019

The international student journey to Germany

Four stages:

Explore

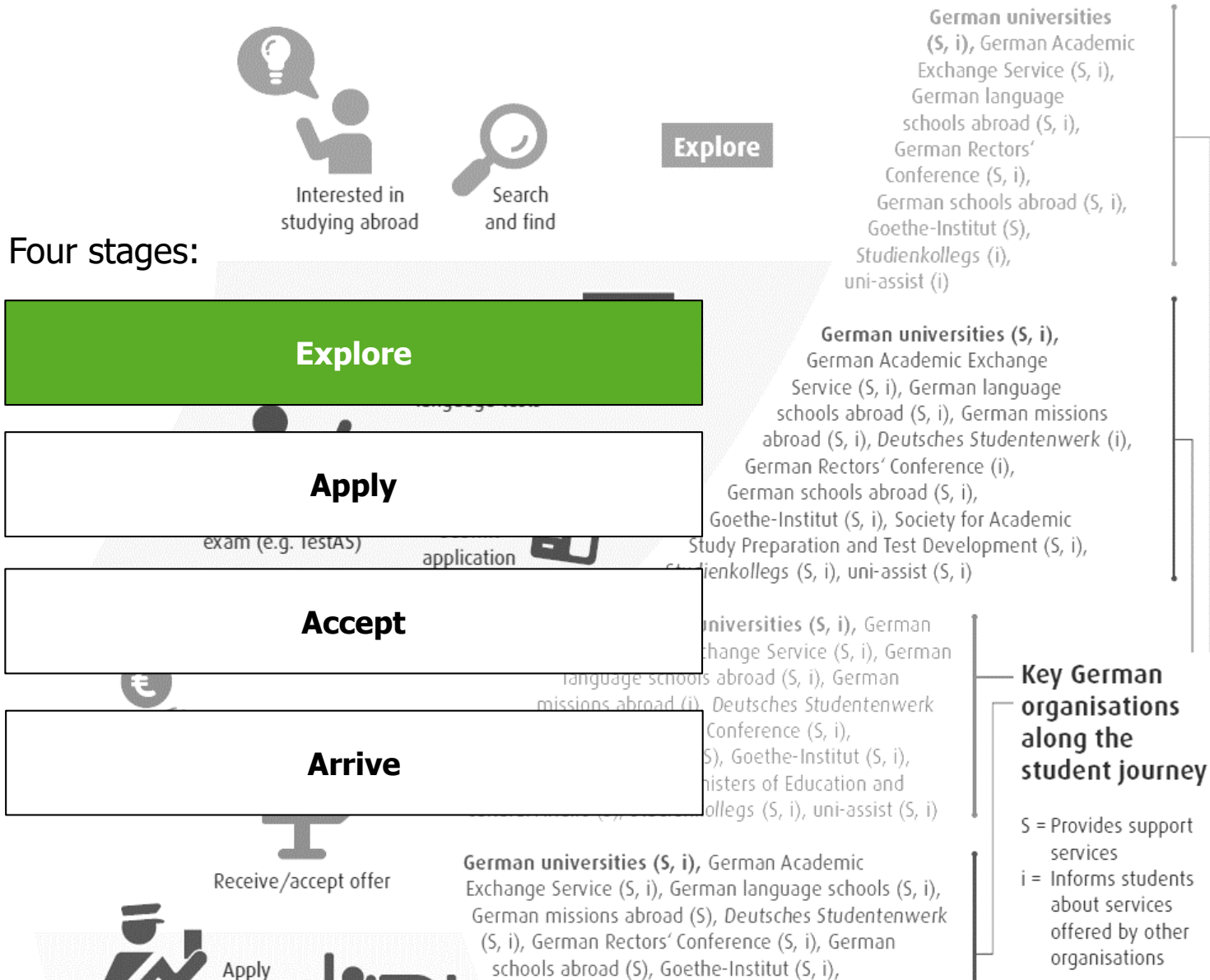
Apply

Accept

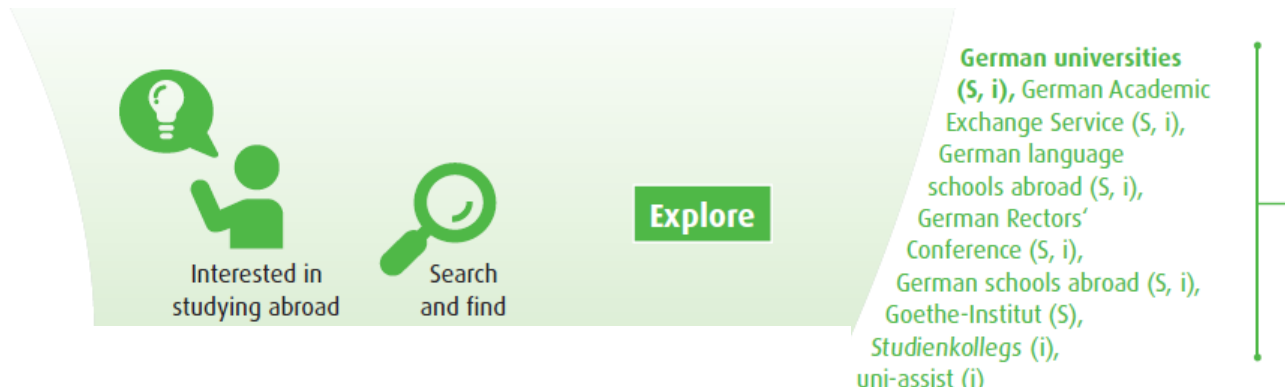
Arrive

The international student journey to Germany

Four stages:



The international student journey to Germany



EXPLORE – Key takeaway:

→ Lack of information is not a problem. But individual orientation and support is.

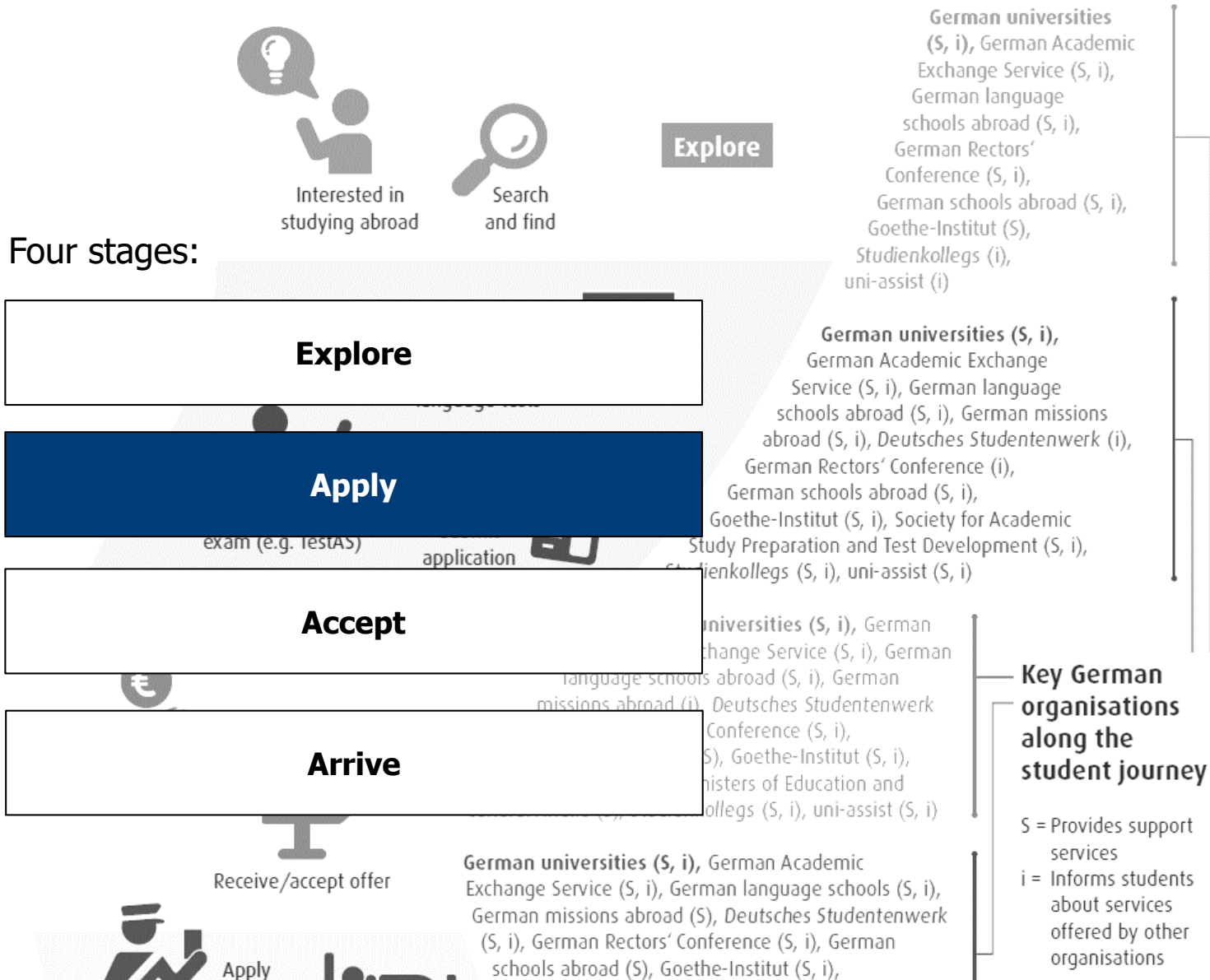
Key German organisations along the student journey

S = Provides support services

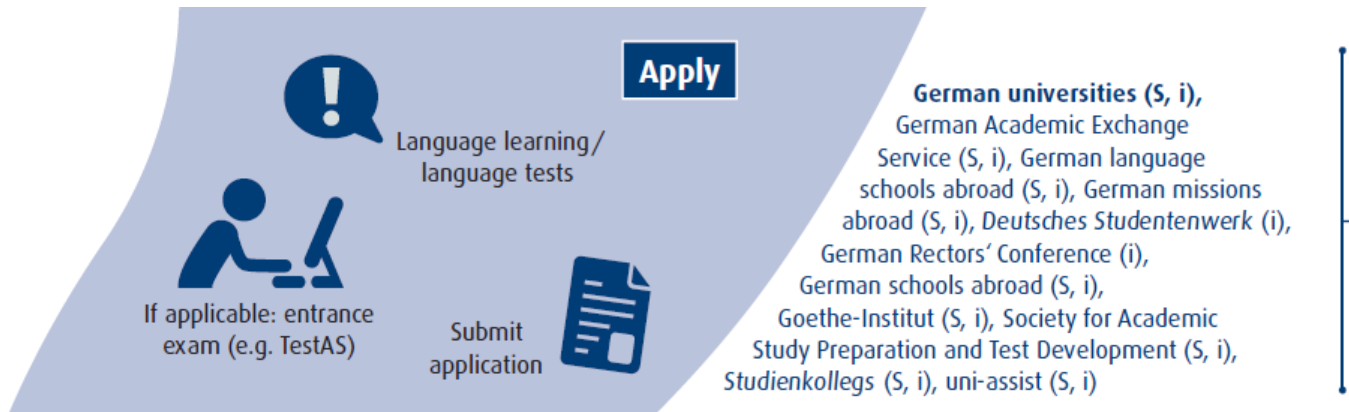
i = Informs students about services offered by other organisations

The international student journey to Germany

Four stages:



The international student journey to Germany



APPLY – Key takeaway:

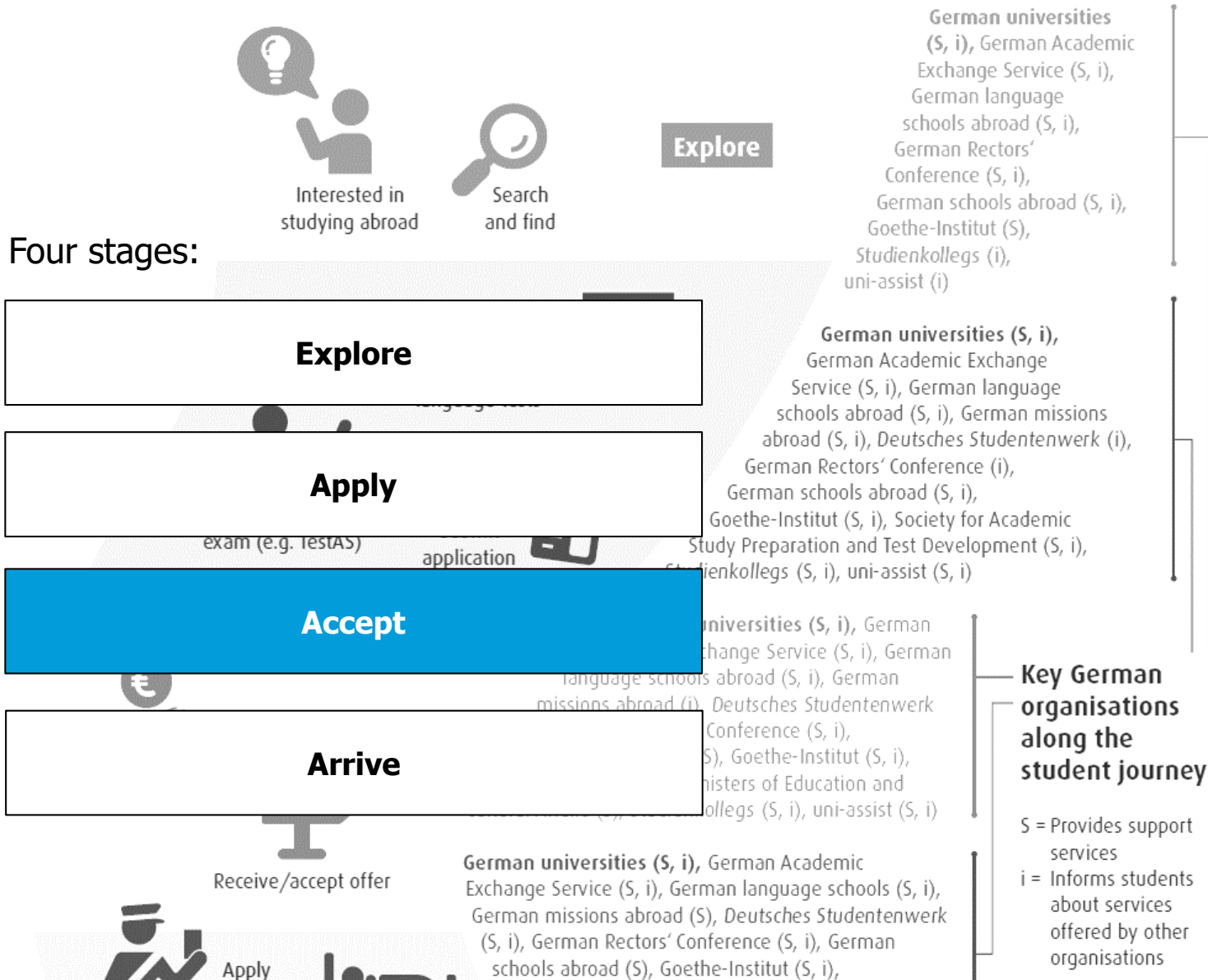
- Germany's pre-requisites aren't necessarily higher than in the UK or other destination countries.
- But: Germany hardly offers study pathways which guarantee a place at a university once the student passes the preparation course (Goethe's *Studienbrücke* is one exception).

Key German organisations along the student journey

- S = Provides support services
- i = Informs students about services offered by other organisations

The international student journey to Germany

Four stages:



The international student journey to Germany

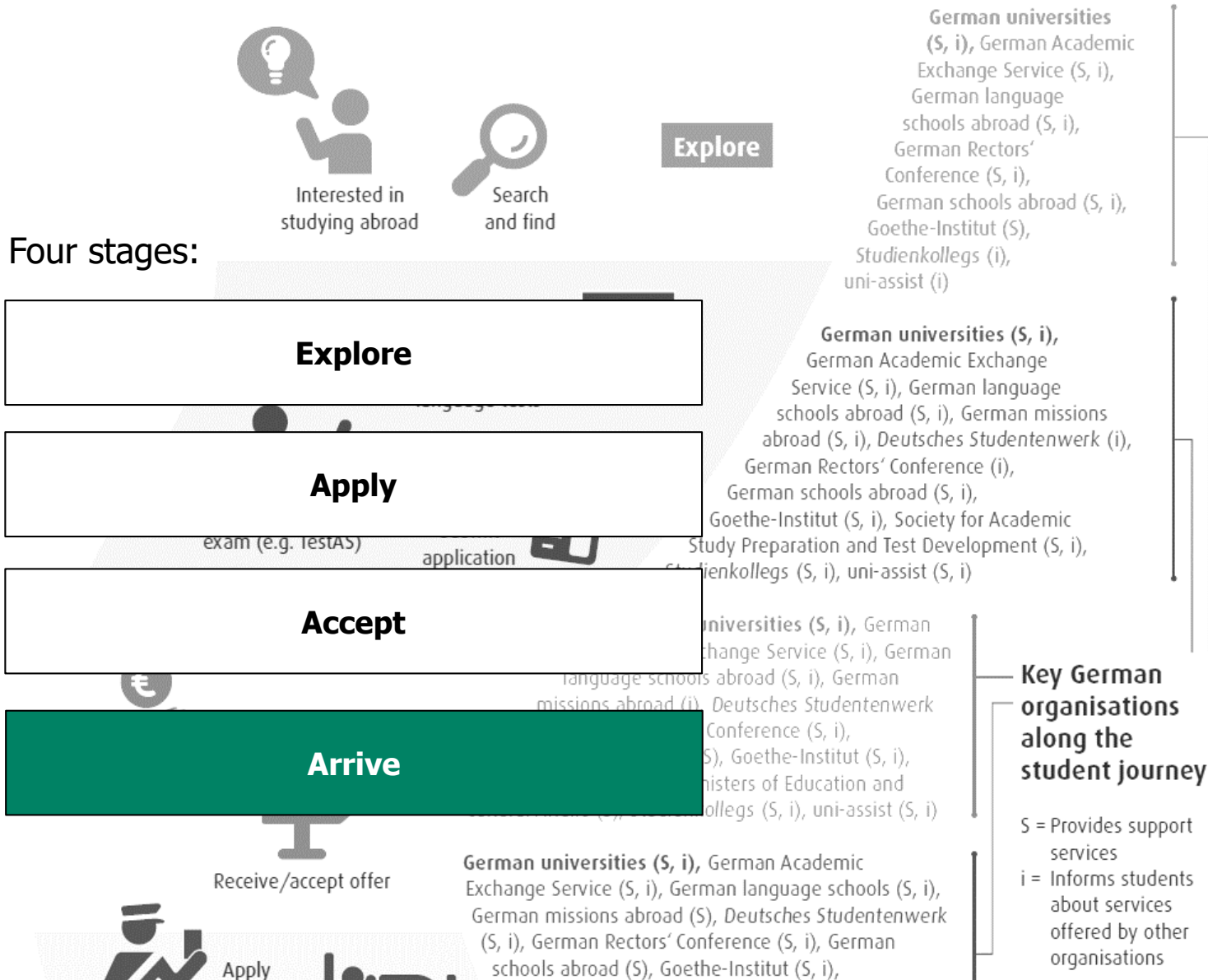
ACCEPT – Key takeaway:

- Germany universities often lose prospective international students because they don't communicate enough with them.
- During the application process, 80% of international applicants expect to hear from their university on a weekly basis.



The international student journey to Germany

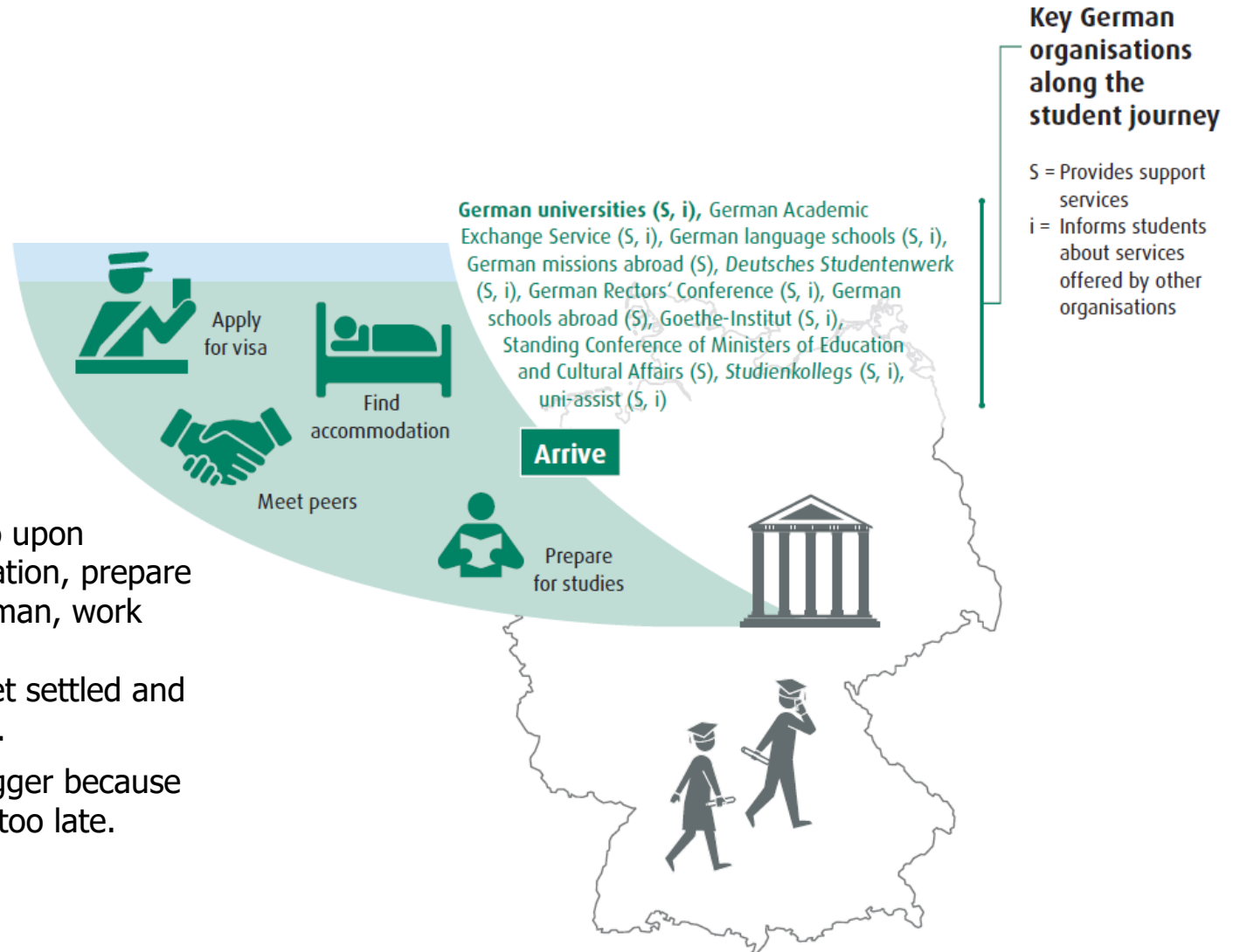
Four stages:



The international student journey to Germany

ARRIVE – Key takeaways:

- Too many things to do upon arrival: find accommodation, prepare for studies, learn German, work part-time etc.
- Not enough time to get settled and meet (German) peers.
- Problems get often bigger because visa are being issued too late.



The international student journey to Germany

- **Germany - Pro**

- Attractive study destination (esp. for STEM)
- Low/zero tuition fees
- Generous visa policies

- **Germany - Con**

- Admission to higher ed is very formalistic
- Processing times for applications and student visa are too long
- Complex support landscape
- High upfront investment to meet prerequisites (language, academics) and even then admission is not guaranteed



Thank you for your attention.



www.svr-migration.de



morris-lange@svr-migration.de



[@svr_migration](https://twitter.com/svr_migration)

Übergangsgestaltung morgen – Entwicklungspotenziale

- Zulassung über individuelle Eignung anstatt nur HZB (*wie bereits in fünf Bundesländern rechtlich möglich*)
- Risiko hoher Vorabinvestition verringern, indem der Weg zum Studium in Deutschland klarer kommuniziert und – bei erfolgreicher Vorbereitung – ein Studienplatz garantiert wird (*vgl. u.a. Studienbrücke des Goethe-Instituts*)
- Stärkere Orientierung im deutschen Angebotsdschungel (*z.B. durch individuelle Wegführung online und offline*)
- Studium in Deutschland bereits im Ausland ‚erfahrbar‘ machen, z.B. durch *blended-learning*-Formate der Vorqualifizierung, die **sowohl online als auch offline** an ausländischen Partner(hoch)schulen stattfinden (*einzelne Hochschulen bieten bereits Online-Vorkurse oder Präsenzkurse zur Studienvorbereitung an ausländischen Partnerhochschulen an*)